

PRODUCT GUIDE

Portable Water Quality Meter **WQC-30 Now on Sales**

The Sales points

1. Superior reliability in low range turbidity measurement

Repeatability in low range turbidity measurement is +/- 1%.

2. Save up to 200 data

Automatic memory at fixed time intervals is available and it is effective for simple monitoring. (The continuous use time is approx. 24 hours)

3. Power-saving design

Approx. 70 hours simultaneous measurement with 2 pcs of AA size batteries. Approx. 90% reduction in electricity consumption compared with our conventional model (WQC-22A).

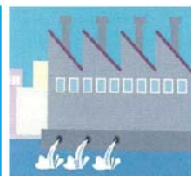
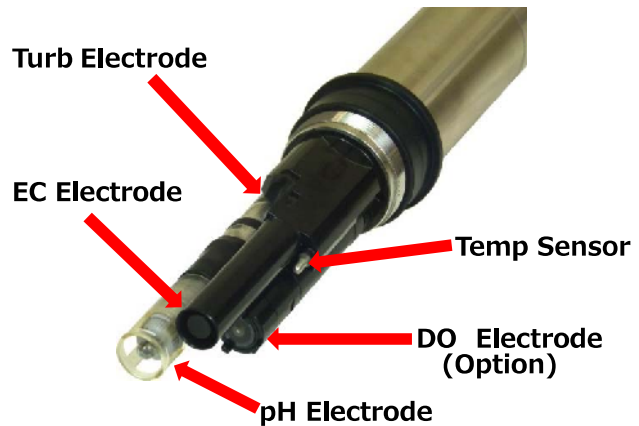
4. System extensibility (Connectable to PC, external printer)

Measurement data can be exported to PC in text format with data collection software.



Measures up to 6 parameters simultaneously for various applications

- pH : Glass electrode
- EC : AC 4 electrodes
- Turb : 90° scattered light
- Temp : Thermistor resistor
- NaCl : Conversion from conductivity
- DO : Membrane polarographic (Option)



Factory effluent



Dam



Lake



River



Construction effluent

PRODUCT GUIDE

Key Differences from conventional model (WQC-22A)

1. Smaller size but tougher body and lower energy consumption

- Easy to operate with one hand with a light handy size.
 - Dimensions : Main unit: Approx. 68 (W) × 35 (H) × 173 (D) mm
 - Weight : Main unit: Approx. 290 g (Including batteries)
- Tougher body & Lower energy consumption for continuous measurement
 - Temperature: 0 to 50 °C
 - Waterproof 0.3MPa
 - IP67
 - 2pcs of AA alkaline battery for 70H operation (DO 30H operation)



WQC-30

2. More extensibility with PC

- 200 data memory
- RS232C input/output

Comparison of WQC series

◎ : Standard ○ : Option

		WQC-22A	WQC-30		WQC-24	
		Standard	Standard	with DO type	Standard	
■ Item	Temperature	◎	○	○	◎	
	pH	◎	○	○	◎	
	ORP				○	
	DO(Membrane)	◎		○	◎	
	EC	◎	○	○	◎	
	PSS Salinity		○	○	◎	
	NaCL Salinity	◎	○	○	◎	
	TDS				◎	
	Seawater gravity				◎	
	Turb (Single Range)	◎			◎	
	Turb (Dual Range)		◎	◎		
	Water Depth				○	
■ Spec	Terminal	Waterproof		IP67	IP67	IP67
		Input/Output		RS-232C	RS-232C	RS-232C
		Analog Out	○			○
		Open collector output				○
		Operating Temp	0~50°C	0~50°C	0~50°C	0~50°C
		Power Supply	Single alkaline x 6	AA x2	AA x2	AA x2
	Sensor Module	Battery Length	50H	70H	30H	35days
		Waterproof	0.1MPa	0.3MPa	0.3MPa	1.0MPa
		Memory No.		200	200	3,360
		Operating Temp	0~40°C	0~45°C	0~45°C	0~45°C
Others	Power Supply				AA x 3pcs	
	Battery Length				35days	
■ Others	GPS				○	