

# ANDEL beats leaks...



**FLOODLINE™** – the award-winning, advanced, addressable, water, oil and multi-gas leak detection system

Protecting your assets. Protecting the environment.



## FLOODLINE™ – the water, oil and multi-gas leak detection system for ALL critical risk areas within the built environment

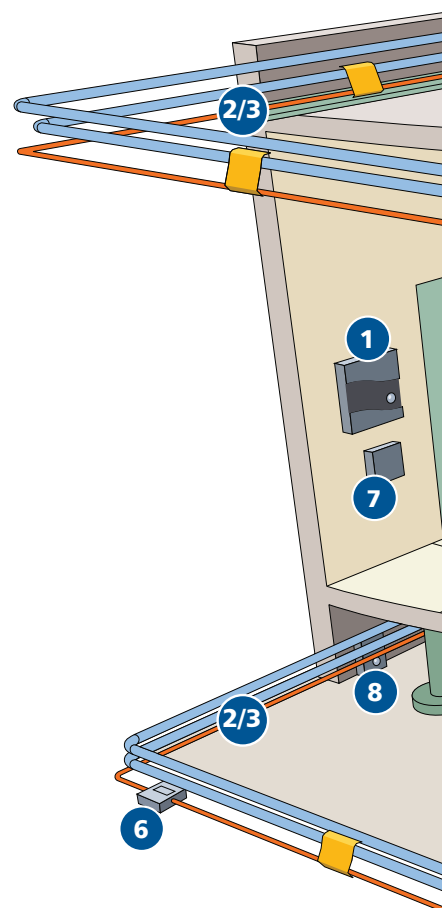
Leaks within buildings are very common, and if left unchecked, will cause extensive damage, disruption and loss.

With a total commitment to service, product development, quality control and pricing, Andel formed in 1992, has emerged as one of the global market leaders in water, oil and refrigerant gas leak detection systems.

## FLOODLINE™ protects any building, any size

FLOODLINE™ covers all possible leak detection requirements, from stand-alone single-zone systems, up to comprehensive multi-zone systems, with the capability to protect the largest of buildings, both old and new.

FLOODLINE™ leak detection systems offer outstanding flexibility, with a range of equipment to tailor each installation to a customer's precise requirements.

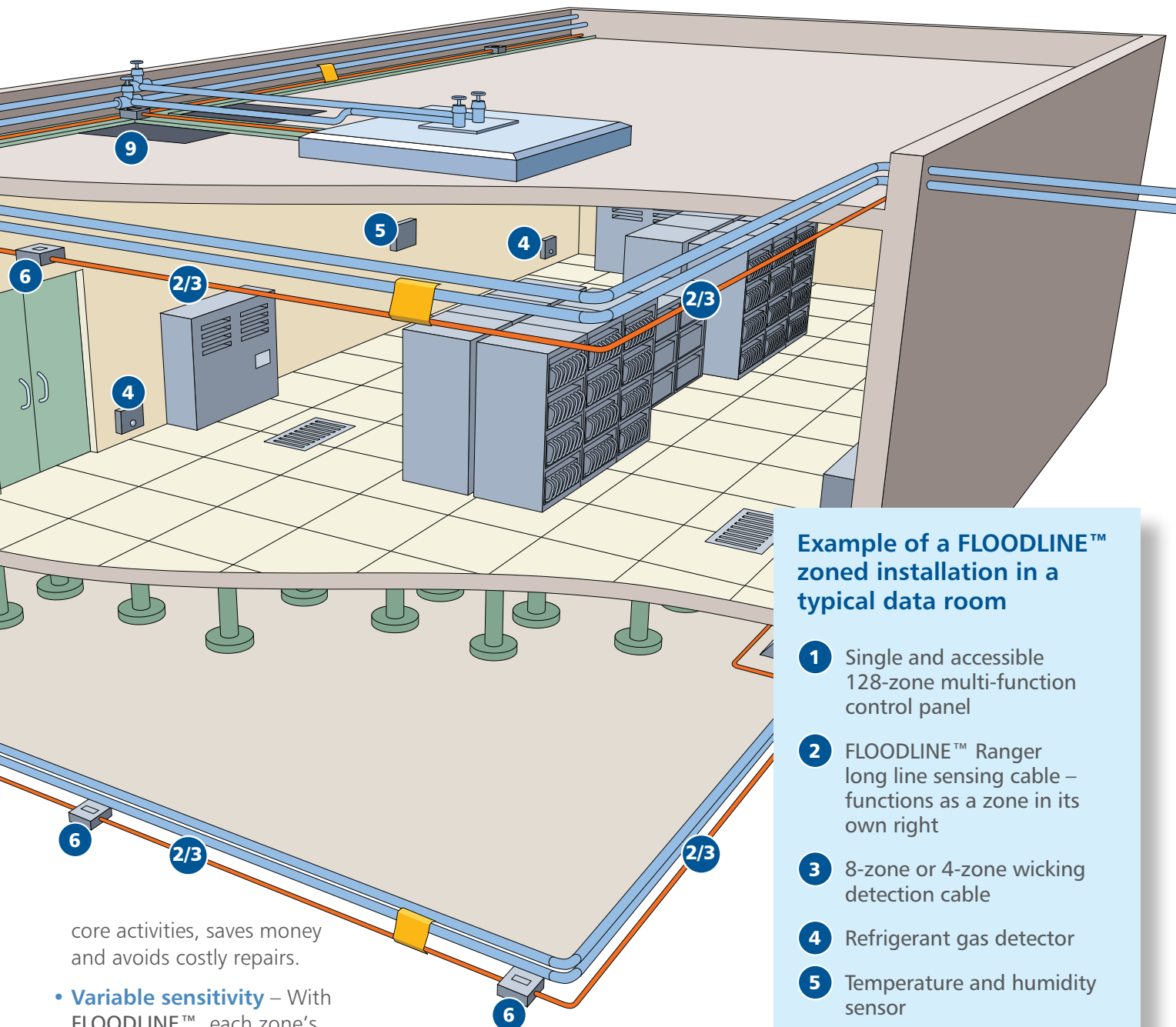


## The benefits of choosing FLOODLINE™ from Andel

- **Resilient** – FLOODLINE™ is a robust, zone-based leak detection system installed in sensitive and critical areas within buildings – providing failsafe early warning of water, oil and refrigerant gas leaks.
- **Saves time and money** – FLOODLINE™ allows early action to be taken to significantly limit the damage, disruption and loss that occur when leaks in buildings are allowed to go unchecked.
- **Unrivalled value for money** – FLOODLINE™ is cost-effective, simple to install, easy to use and totally dependable.
- **A range of sensors** – For water, oil, refrigerant gas, temperature and humidity.
- **Muliti-function control panel** – A unique, single, multi-function control panel – more cost-effective to install, maintain and monitor.
- **A zoned system** – Unlike other technologies, FLOODLINE™ consistently delivers accurate warnings for multi-leak detection. It is highly resistant to false alarms that can be common in other technologies. If a zone is third-party damaged, the repair to the zone is easy and cost-effective, and importantly, other zones remain unaffected, continuing to provide full leak detection monitoring.
- **Easily maintained** – All electronic intelligence is contained within the single, multi-function control panel, which is always above floor level and fully accessible. With other systems, electronic intelligence is often in numerous locations under the floor and difficult to access. Choosing FLOODLINE™ significantly reduces disruption to

For more information call  
Andel on +44 (0)1484 845 000  
[www.andel.co.uk](http://www.andel.co.uk)  
[help@andel.co.uk](mailto:help@andel.co.uk)





### Example of a FLOODLINE™ zoned installation in a typical data room

- 1 Single and accessible 128-zone multi-function control panel
- 2 FLOODLINE™ Ranger long line sensing cable – functions as a zone in its own right
- 3 8-zone or 4-zone wicking detection cable
- 4 Refrigerant gas detector
- 5 Temperature and humidity sensor
- 6 Plug and play connectors
- 7 Solenoid control panel – shuts off water supply in the event of a leak
- 8 Vertical point sensor – wall-mounted, tough and compact
- 9 Flexi-Pad sensor – for shallow voids and wrapping around pipes

core activities, saves money and avoids costly repairs.

- **Variable sensitivity** – With FLOODLINE™, each zone's sensitivity can be adjusted to take into account the environment and working conditions for that zone, reducing the risk of false alarms.
- **Addressable system** – Any zone can be any mix of sensors.
- **BMS compatible** – Alarm notifications can be relayed to BMS.

- **Future proof** – Additional zones and upgrades can be easily and cost-effectively bolted on.



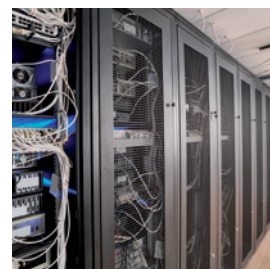


Protecting your assets. Protecting the environment.

## FLOODLINE™ – tried and tested for a quarter of a century by:

The British Museum  
HM The Queen  
The Houses of Parliament  
Vodafone  
EE  
Virgin  
Barclays  
The Pentagon  
MIT  
Hong Kong International Airport  
Global Switch  
GlaxoSmithKline

HSBC  
Bank of America  
J.P. Morgan  
AstraZeneca  
Pfizer  
Credit Suisse  
Airbus  
Rolls Royce  
Microsoft  
Google  
Facebook



**For more information call  
Andel on +44 (0)1484 845 000**

Head Office: Andel Ltd, New Mills,  
Brougham Road, Marsden, Huddersfield,  
West Yorkshire HD7 6AZ

**[www.andel.co.uk](http://www.andel.co.uk)   [help@andel.co.uk](mailto:help@andel.co.uk)**