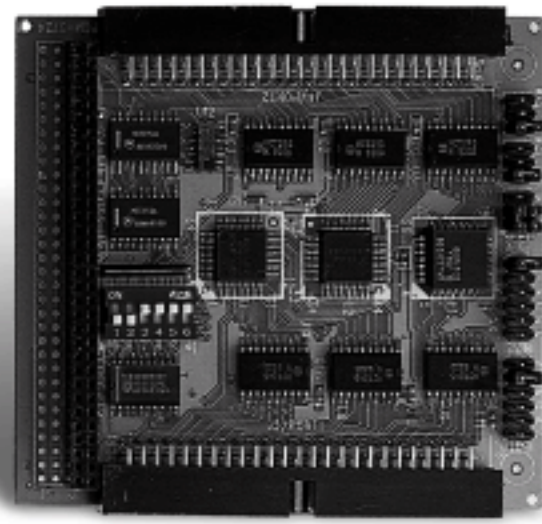


PCM-3724

The Power That Solves
PC/104 48-channel DIO Module



Specifications

Channel	48 digital I/O channels
Throughput	300Kbps typical; 400Kbps max.
Input Voltage	Logic 0 : 0.8V max. Logic 1 : 2.0V min.
Output Voltage	Logic 0 : 0.5V max.@24mA (sink) Logic 1 : 2.0V min.@15mA (source)
Power Requirements	+5V, ±5% tolerance on power supply
Operating Temperature	32°F ~ 140°F (0°C ~ 60°C)

Ordering Information

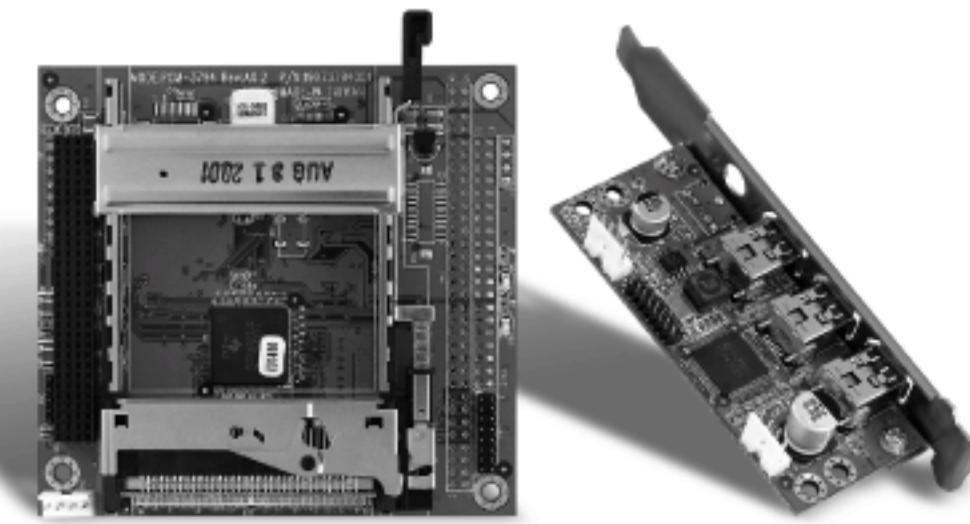
- **PCM-3724-A20**
PC/104 48-channel DIO Module

Features

- Output status read back
- Channels simulate 8255 PPI mode 0
- Interrupt triggering, rising/falling edge

PCM-3794/3594

PCI-104 2-slot PCMCIA Module /
Three IEEE-1394 Ports Daughter Board



Specifications

Standard	1997 PC Standard compliant PCI Local bus Specification Revision 2.1/2.2 compliant ACPI 1.0 compliant PC98/99 compliant
Other	Supports distributed DMA and PC/PCI DMA
Comptability	Mix-and-match 5V/3.3V PC Card16 cards and 3.3V CardBus cards
PCM-3594 Daughter Board	
Standard	OHCI link function designed to IEEE-1394 Open Host Controller Interface (OHCI) Specification OHCI link function is IEEE-1394-1995 compliant and compatible with proposal 1394a Supports serial bus data rates of 100, 200, and 400 Mb/sec
Operating Temperature	32°F ~ 140°F (0°C ~ 60°C)

Features

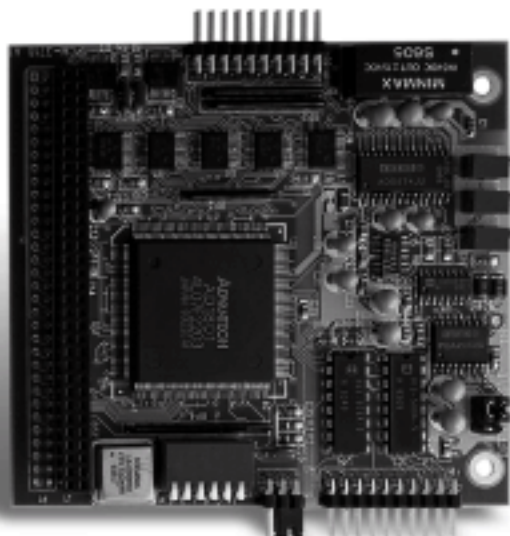
- PCMCIA socket supports two Type II cards or one Type III card
- Support R2 and Cardbus
- Supports two PC Cards or CardBus slots with hot insertion and removal
- Zoomed video auto-detect
- Supports three IEEE-1394 ports (with PCM-3594)

Ordering Information

- **PCM-3794-A10**
PCI-104 two-slot PCMCIA Module
- **PCM-3794-A10-01**
PCI-104 two-slot PCMCIA Module with PCM-3594

PCM-3718H

PC/104 12-bit DAS Module with Programmable Gain



Specifications

Analog Input	
Channels	16 single-ended or 8 differential inputs
Resolution	12 bits
Input Range	Bipolar : ±10, ±5, ±1, ±0.5, ±0.1, ±0.05, ±0.01, ±0.005
Digital Input/Output	
Channel	two 8-bit TTL-level Digital I/O channels
Input Voltage	Logic 0: 0.8V max. Logic 1: 2.0V min.
Output Voltage	Logic 0 : 0.33V max.@6mA (sink) Logic 1 : 3.84V min.@6mA (source)
Power Requirement	+5V, ±5% tolerance on power supply
Operating Temperature	32°F ~ 140°F (0°C ~ 60°C)

Ordering Information

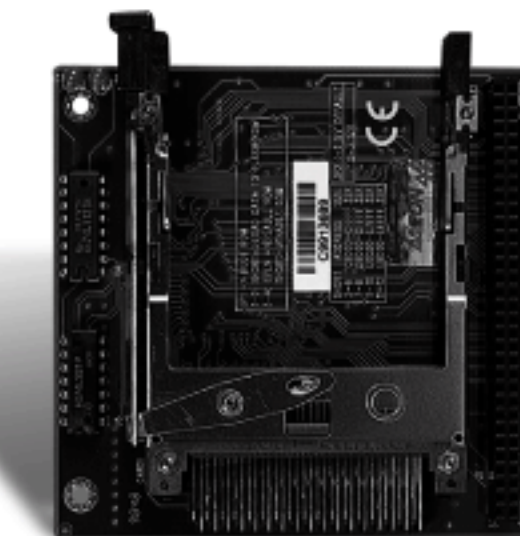
- **PCM-3718H**
PC/104 12-bit DAS Module with Programmable Gain

Features

- 16 single-end or 8 differential analog inputs
- 12-bit A/D converter, up to 100KHz sampling rate with DMA transfer
- Two 8-bit digital input/output TTL level channels

PCM-3115B

PC/104 2-slot PCMCIA Module



Specifications

Standard	Complies with PCMCIA v.2.1 and JEIDA v4.2
Memory	Programmable 8KB boot FLASH ROM
Interface	16-bit data bus
Indicator	Busy status LED
Power Requirement	+5V

Features

- PCMCIA socket supports two Type I/II cards or one Type III card
- Supports bootable function from linear Flash Card, ATA card, and SRAM card

Ordering Information

- **PCM-3115B**
PC/104 two-slot PCMCIA Module

1	Compact Board
2	Sub Compact Board
3	Full-Size CPU Card
4	Half-Size CPU Card
5	Media PC
6	Embedded ATX Board
7	PC/104 Module
8	Display Monitor
9	Panel PC
10	Operator Panel
11	LCD PC
12	Workstation
13	Embedded Control PC
14	IPC Solution
15	Accessory